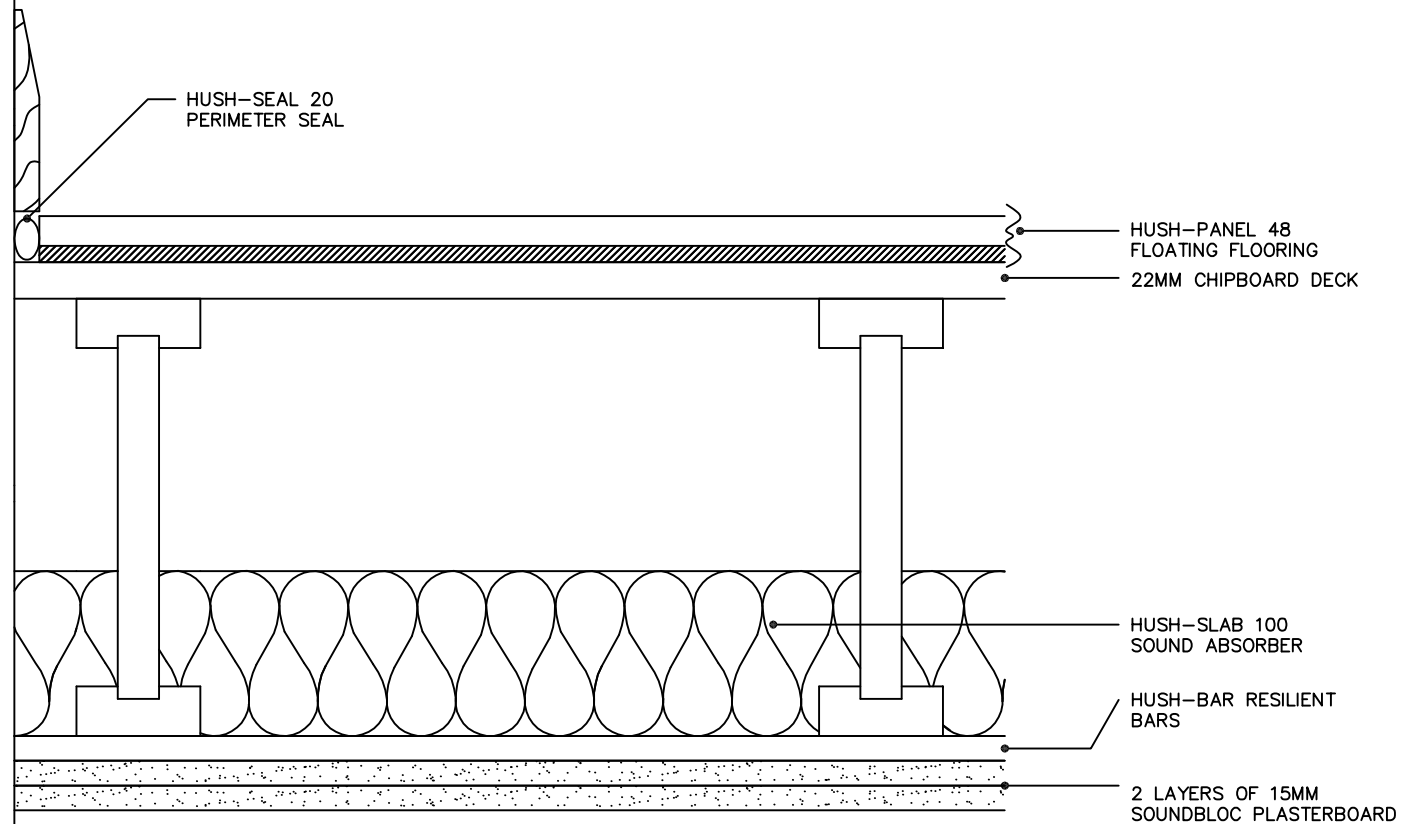


TYPICAL TEST RESULT

IMPACT $L_nTW = 54dB$ $D_nTW + CTR = 49dB$

HUSH-PANEL 48 LAID OVER FLOOR DECK AS PER MANUFACTURERS INSTRUCTIONS WITH ALL PERIMETERS SEALED USING HUSH-SEAL 20. HUSH-SLAB 100 FITTED BETWEEN JOISTS THEN HUSH-BAR RESILIENT BARS SCREW FIXED TO THE UNDERSIDE OF JOISTS AT 600MM CENTRES ONTO WHICH IS SECURED TWO LAYERS OF 15MM SOUNDBLOC PLASTERBOARD, SEAL ALL PERIMETERS PRIOR TO SKIMMING. PROVIDES A 1 HOUR FIRE RESISTANCE AT CEILING LEVEL.



HUSH (UK) LTD
HUSH-SYSTEM PREMIER
TYPE HD1027